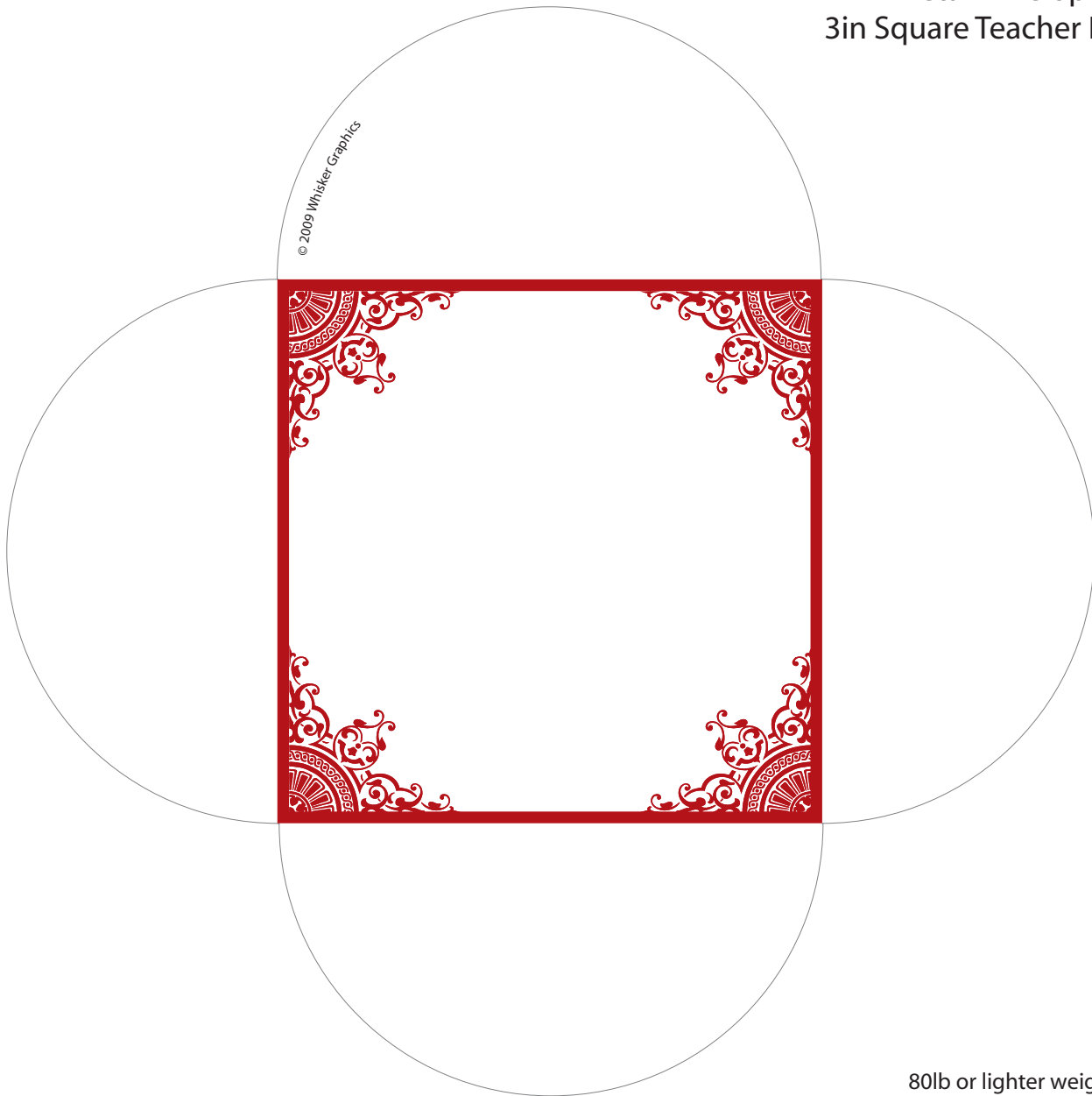


3in x 3in Bookplates for Teachers ~ Female Version

Print on paper, card stock or full sheet labels, trim at cut marks.

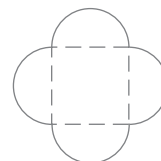


Petal Envelopes for 3in Square Teacher Bookplates



80lb or lighter weight white or
light cream card stock works best.
but copy paper works too!

cut around edges



← score where envelope folds (see
dashed lines in diagram)

fold flaps so they interlock