

# 3in x 3in Bookplates for Teachers ~ Female Version

Print on paper, card stock or full sheet labels, trim at cut marks.

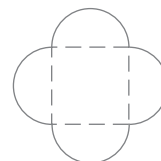


## Petal Envelopes for 3in Square Teacher Bookplates



80lb or lighter weight white or  
light cream card stock works best.  
but copy paper works too!

cut around edges



← score where envelope folds (see  
dashed lines in diagram)

fold flaps so they interlock